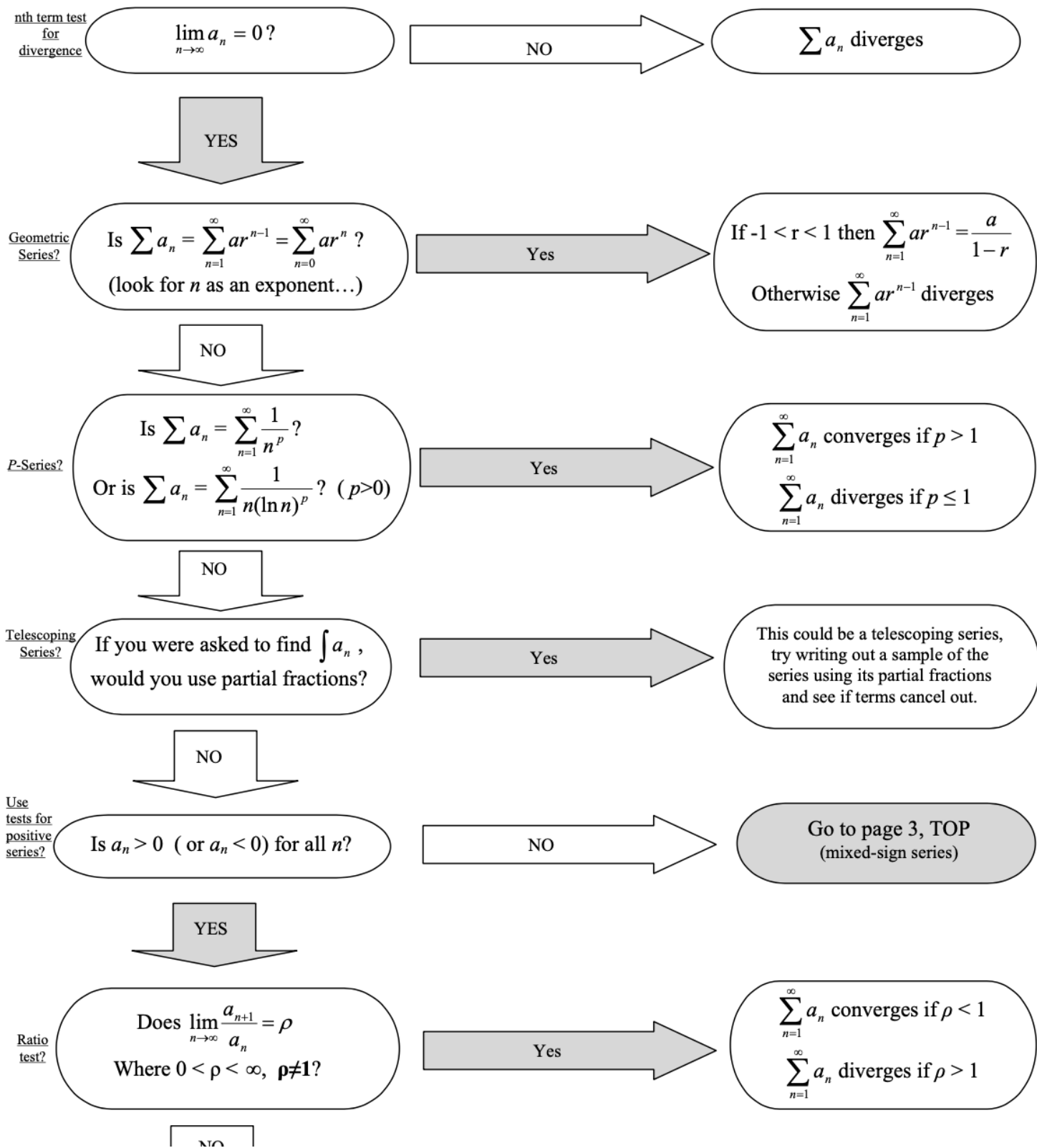
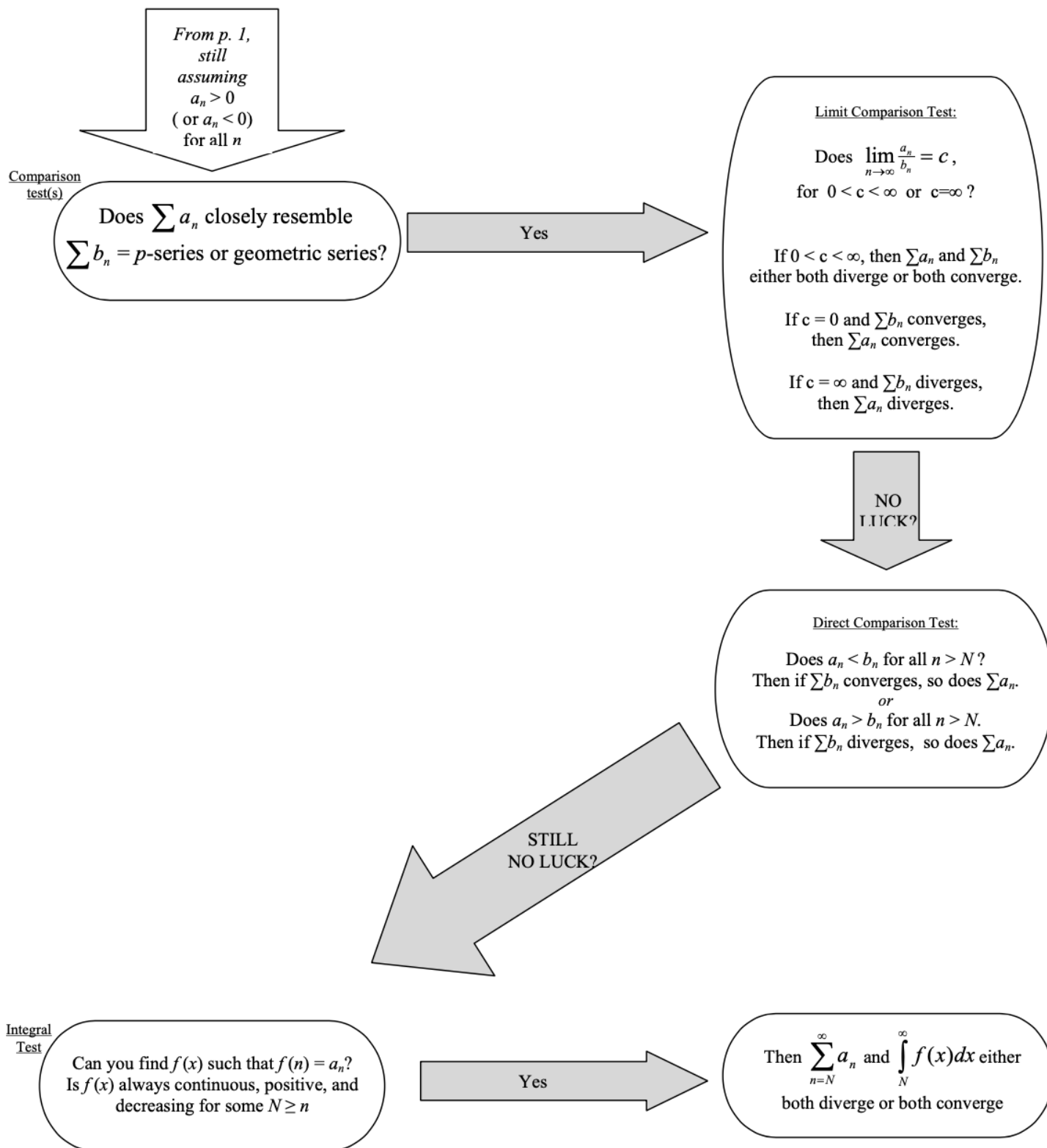
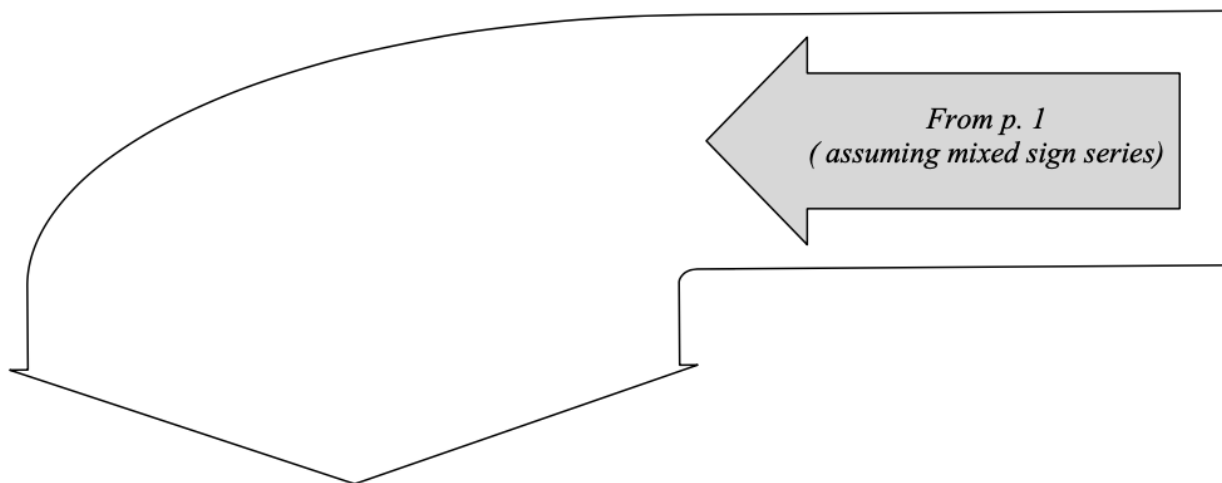


Flow Chart for $\sum a_n$ Convergence







Absolute
Convergence

Does $\sum |a_n|$ converge?
[Use positive series tests
(from p. 1) on $\sum |a_n|$.]

Yes

Then $\sum a_n$ converges

NO

Alternating
Series
Test

Is $\sum a_n$ an alternating series?

Yes

Alternating series test:
If $|a_{n+1}| \leq |a_n|$ and $a_n \rightarrow 0$,
then $\sum a_n$ converges

NO

Yeah, well, good luck with that!